



*“Serving God,  
Honoring Creation,  
Embracing Differences”*



903-657-2529

[www.fpchendersontx.org](http://www.fpchendersontx.org)



**FIRST PRESBYTERIAN CHURCH  
P. O. BOX 773  
HENDERSON, TEXAS 75653-0773**

Stamp



# THE PRESBYTERIAN PIPELINE

A MONTHLY PUBLICATION OF FIRST PRESBYTERIAN CHURCH - HENDERSON, TEXAS

Volume 53

September 2021

Issue Eight

## *Worship in a Time of Pandemic*

Beloved family of God, Covid continues to shape our lives. There were weeks when we were on our way to “normal.” As widespread as that hope seemed, it was premature. We are approaching the eighteen-month anniversary of shutdowns and there is no indicator of when this will pass.

What do we do now that we must co-exist with the pandemic for the immediate future?

We allow ourselves the space to grieve. We have faced death in large numbers. We have wrestled with our own mortality in determining our behavior. We have experienced helplessness in the face of an invisible enemy. These realizations are challenging and deserve our attention. Perhaps we need to talk them through with a professional or a friend. We need to experience the emotions that have been stirred within us so that we can be healthy and whole in the future. Grieving is natural. Allow it to happen.

Choose a reliable source of information that will keep you informed but avoid the daily information dumps that repeat the same dire statistics over and over. Trust that any major turning of the tide will make headlines.

Pray fervently for peace, strength, wisdom and endurance.

Create peace in your life. Make time for it every day. Sit with an iced tea and listen to the birds or watch the butterflies. Look for signs of fall in the trees. Re-read a favorite book or something by a favorite author. Read scripture. It isn't a race or a hurry up or a check the box and move on to the next thing – enjoy time for yourself. Let your mind clear. Allow yourself to just be. Your only thought may be a whispered, *thank you, Lord*, as you transition to the next part of your day. Be gentle with yourself.

Be compassionate with others. We are all in this together. The average stress and normal tensions of waking up on the wrong side of the bed, trying to get to bridge club on time when the dog is not cooperating, running low on gas and forgetting to pick up greens for tomorrow's meal will still be there. These stressors compound with the added layer of pandemic fatigue. This is true for us and our neighbors. We all need a dash of extra patience and TLC to get through our days.

By now in this pandemic adapted world, we know that we must choose which risks we are willing to take, and which risks are not worth the effort. These choices are not the same for everyone. Again, we have the opportunity to be loving and lenient with one another.

In a church like ours, we have options. We can attend via Facebook. We can read and pray with the materials that come in the e-mail. (continued)

(continued from page 1) We can comfortably enter a masked and distanced sanctuary and sing and pray together almost like before. We can even use the church to make donations to HIM locally, and to Presbyterian Disaster and Mission agencies for national and international purposes. The world is changing, but we still have options and choices.

May we all keep our hearts and minds open to ways we can celebrate the abundance we have. Let's not allow the pandemic to prevent us from sharing the love and community that we all need to thrive.

Rev Michele

### Member Care

Our Member Care Team consists of **Lynn, Rev. Michele, Carolyn , Mary, Steve, Kathy, and Claudia**. Due partially to Covid-19, we haven't met regularly, but usually keep in touch via email, phone calls, and texts. Prayer Companions are active with requests as we receive them. We send cards to members individually and as a congregation. Please continue with calls to keep up with our members in these trying times and let our team know if additional assistance is needed. Some of our members provide food occasionally, and we work with the Worship Team to deliver home communion to those who cannot get out easily. Members of the Session take turns going with the pastor for these visits so we can all be aware of congregational needs. We are aware that all needs are not met, but will appreciate new ideas of ways we can be of assistance.

Blessings abound!!

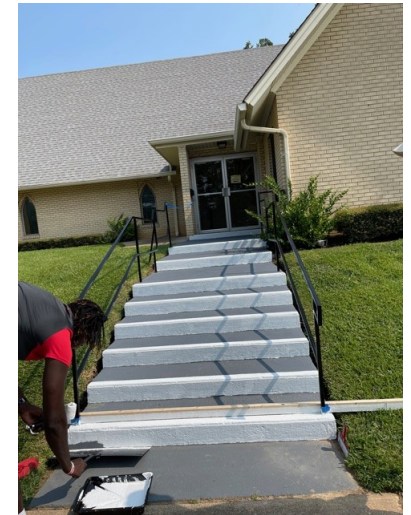
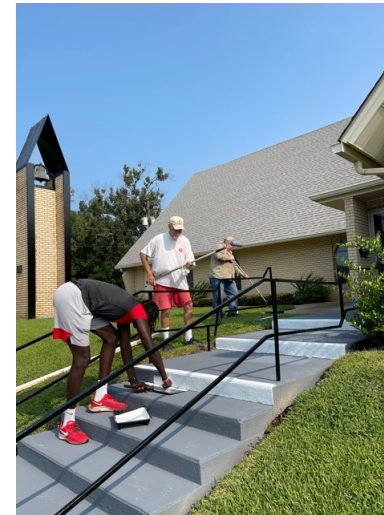


Our new study for the combined adult classes began in August and will last for 7 weeks. Entitled ***Luke, Six Themes Everyone Should Know***, the series focuses on the study of Scripture, and introduces major biblical themes. We have just started so we invite you to join us on Sunday mornings for the class which starts at 9:45 am in the church parlor. Our willing and very capable teachers take turns to bring us these lessons to increase our Christian devotion to God.

The C. E. team has reviewed and integrated new books into our great selection in the library. We encourage each of you to step into the library and see what is available for your use. We have selected several books that we will place in the Narthex for giveaway in the next few weeks.



The sun was just rising when the **Building and Grounds Crew** began work on August 4.



Special thank you to all who worked: Lynn, John, Kathy, Tom, Claudia, Weldon, and their guest Assane.







We are overjoyed to announce that the **YATES PARK SCHOOL SUPPLY DRIVE** was a great success.

The City of Henderson announced that **1200 backpacks with supplies** were distributed to the children. We thank you for your continued and always generous hearts.

**FILLED WITH LOVE** | The backpacks handed out at Henderson Civic Center are filled with more than pencils, paper and notebooks. They are bursting at the seams with the love of Betty Jean Elder, who since 1985 has organized the annual 'Yates Park Help The Youth School Supply Project'.



**Go Shopping and Support  
First Presbyterian Church  
Henderson, TX**

If you are already an existing Amazon customer but have not selected First Presbyterian Church Henderson as your charitable organization, simply login to [smile.amazon.com](https://smile.amazon.com) using your normal [www.amazon.com](https://www.amazon.com) login.

Type *First Presbyterian Church Henderson* under **"Start by picking your charity"** and click **Search**. Select First Presbyterian Church, Henderson, TX; and then click, **"Start Shopping"**.

Amazon will donate 0.5% of the price of your eligible purchases to First Presbyterian Church Henderson.



**HELP US TO LET PEOPLE KNOW WE ARE HERE!  
LIKE US ON FACEBOOK AT  
FIRST PRESBYTERIAN CHURCH HENDERSON, TX.**



### Building and Grounds

We've been working on the church, all the live long day..... Yes, the B&G Team has continued to work on projects in and around the church.

Of particular note, the outside steps project is complete! Weather and time had been inhibitors to the completion of this project; however, as the saying goes, anything worth having is worth waiting for and the final product does look nice don't you think.

We as a church confirmed a new mission statement ***"Serving God, Honoring Creation, Embracing Differences"*** some time ago. The Session working with the assistance of the B&G Team have now displayed the new mission statement on a banner in the Fellowship Hall. As fate would have it, we got two banners with our Mission Statement for the price of one so we are also working on an appropriate means to display a banner outside throughout the year as well.

You may also note that the Bell Tower and the metal Crosses near the upper level parking all received a needed facelift too. Again, weather and health of our contractor delayed this project a little; however, again the end result looks great.

Some clean-up work was done to the foliage from the neighbor's yard that was intruding on our side; we continue with some of the routine efforts inside like lighting and general upkeep.

As always, if you see something that needs our attention, please let someone of Building & Grounds know.

With helping hands.

Building & Grounds

Steve, Claudia, Michael, Weldon,  
Elizabeth, Kathy, John, and Tom



# The Worship Committee

Happy September!

The first day of Fall is September 22<sup>nd</sup>! We are sure we will all be ready for some cooler weather.

Rev. Michele will be out on September 19<sup>th</sup>, so we will have a guest preacher that day.

Remember that the first Sunday, Sept. 5<sup>th</sup>, is our “bring donations for HIM” Sunday.

We pray that everyone has a blessed and safe month.

Peace be with you all.

## *Please keep these dear ones in your prayers:*

Kay W., who has had health issues  
Charlie, 1 year-old great-granddaughter of Travis & Patsy, hospitalized with health issues  
For our church, during this time of discernment  
For those who are economically vulnerable during this time of Covid  
For all the front-line workers during this time of pandemic: doctors, nurses, hospital workers, firefighters, EMTs, and police.

This is what God's kingdom is like: a bunch of outcasts and oddballs gathered at a table, not because they are rich or worthy or good, but because they are hungry, because they said yes. And there's always room for more.

Rachel Held Evans

# DID YOU KNOW?

Did you know that beverage companies are working to reduce plastic pollution? Plastic has become an issue for consumers, particularly related to plastic waste in the environment.

This directly impacts the beverage industry, which is made up of 45% rigid plastic packaging, only 25% of which ends up being recycled in the US. The American Beverage Association reports that America’s leading beverage companies—The Coca Cola Company, Keurig Dr. Pepper, and PepsiCo—are collaborating in an integrated and comprehensive initiative, ***Every Bottle Back***.

Every Bottle Back is an initiative to reduce the beverage industry’s plastic footprint by using less new plastic and investing in efforts to get plastic bottles back through recycling so new bottles may be made from the returned bottles, and they won’t end up in oceans, rivers, and beaches.

The new initiative’s goal is to get every bottle back. The new plastic bottles are made to be remade. They are designed to be 100% recyclable—even the caps. The goal is for every bottle to become a new bottle which will be made of a plastic material called PET which is 100% recyclable.



The initiative will provide means to:

- \* Measure plastic footprints. The World Wildlife Fund is providing scientific advice.
- \* Raise awareness and support recycling efforts. Investments will be made in campaigns to reinforce and promote recycling and support will be given to communities across the country in their efforts to improve recycling.
- \* Invest in recycling infrastructure. \$400 million will be directed to key regions of the country to improve quality and availability of recycled plastic.
- \* Add message on packaging. Bottles will include a message to recycle.

Each one of us can help in this campaign to reduce plastic in the environment by recycling every plastic bottle from these companies with the recycle notation.

The Christian Education Green Team



## Prayer for the Beginning of School



God, grant wisdom and understanding to the public officials, school boards, superintendents, and administrators who have many concerns and challenges for this coming school year. Shower them with creativity and clarity in all of the work they must do.

Lord, please have mercy on the parents and other caregivers of students who face perplexing situations and schedules.

Holy God, help students of all ages in the coming days, weeks, and months. Please keep them all safe and healthy while they learn.

Lord, you know the situations faced by teachers at this time. Please come to them and strengthen them, granting fresh ideas and miraculous effectiveness in their workplaces and work challenges.

God, hear our prayers for school system personnel facing challenges in their lives and livelihoods: custodial staff, cafeteria staff, bus drivers, and other. Grant relief to those who are overworked and encouragement to those who are overwhelmed.

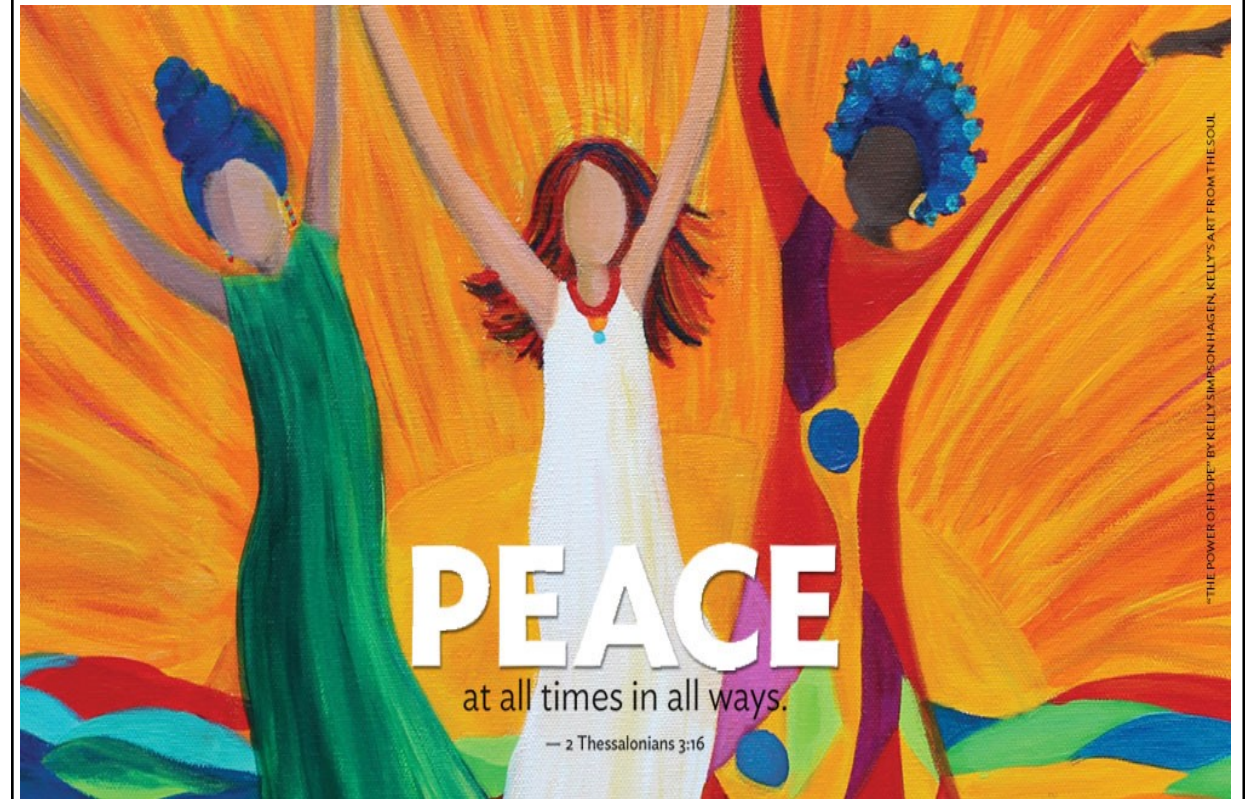
For all of the above, Lord, please protect and preserve them physically, emotionally, and mentally. Keep them safe and healthy; increase their strength and stamina now and in the future.

In the name of Jesus, we pray. Amen

*Excerpts from: Bob Hostettler 8-6-20 "How to Pray"*



## The Outreach Team - Claudia, Tom, Jimmy, Katie, Elizabeth, Kathy, John and Lynn



Our work of peace and reconciliation is supported by gifts to the **Peace & Global Witness Offering**. These gifts also unite us with Presbyterian peacemakers across the country and the world who are active, not passive; who are doing, not waiting.

**25% of this Offering** will stay with our congregation for our own ministries of peacemaking and reconciliation.

**25% of this Offering** will go to joining with other congregations in our area to support peacemaking work in our region.

**50% of this Offering** supports programs and ministries working actively for peace and justice around our nation and the world.

When we all do a little, it adds up to a lot.

The first Sunday of September begins our ***Season of Peace*** and will culminate on October 3rd, ***World Communion Sunday***.

# September 2021



Sun	Mon	Tue	Wed	Thu	Fri	Sat
			1	2	3 Meals on Wheels	4
5 9:45 Sunday School 11:00 Sanctuary/FB Live Worship/Communion 12:00 Choir Practice <b>HIM Donation Day</b>	6 <b>LABOR DAY</b> 	7 Home Communion 6 pm <b>Theology on Tap</b>	8	9	10 Meals on Wheels	11 
12 9:45 Sunday School 11:00 Sanctuary/FB Live Worship 12:00 Choir Practice <b>3:00 Walk with a Doc</b>	13	14	15	16	17 Meals on Wheels	18
19 9:45 Sunday School 11 am Sanctuary/FB Live Worship/Guest Preacher 12:00 Choir Practice	20	21	22  1st Day of Autumn	23 6 pm <b>Session Meeting</b>	24 Meals on Wheels	25 <b>Grace Presbytery</b> — virtual worship
26 9:45 Sunday School 11:00 Sanctuary/FB Live Worship 12:00 Choir Practice	27 Pipeline Deadline	28	29	30		

## Duty Elder for September

*Kathy Porter*



## Liturgists for September

9/5 Kelly

9/12 John

9/19 Kathy

9/26 Claudia

## *September Birthdays*

*9/1 Cindy*

*9/17 Claudia*

*9/24 Lynn*

