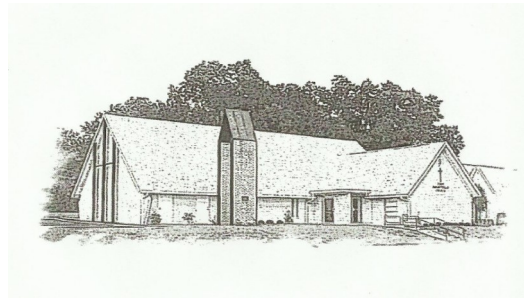




**First  
Presbyterian  
Church**  
Henderson, Texas



903-657-2529

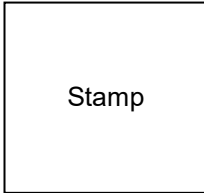
[www.fpchendersontx.org](http://www.fpchendersontx.org)



*“Serving God,  
Honoring Creation,  
Embracing Differences”*



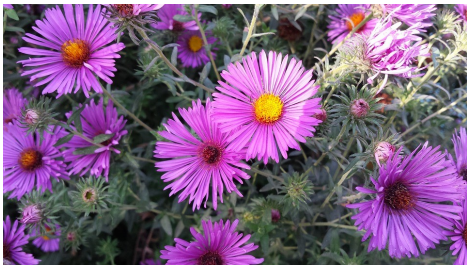
**FIRST PRESBYTERIAN CHURCH  
P. O. BOX 773  
HENDERSON, TEXAS 75653-0773**



Stamp



Mailing Label



# Connections

**First Presbyterian Church**  
Henderson, Texas

September 2023 Vol. 55:09

Following Our Star [Words]

My Star Word for this year is footprints. I’ve had to look at it frequently – I keep remembering footsteps, not footprints. The first thing that comes to mind is the Footprints in the Sand poem. In short, as a person looks back on their life, they see footprints in the sand. In times of difficulty, they see only one set, instead of two, and ask the Lord, “why did you leave when I needed you most?” God answers, “The times when you have seen only one set of footprints is when I carried you.” The idea of walking side by side with God through life is an appealing one, which is why the poem has become so familiar that it is mistaken for a biblical passage. But there is more to footprints than impressions left in the sand. Footprints are evidence, like tracks through the forest or marks on a trail that indicate where we have been or that someone has gone ahead of us. When Jesus walked on the water, he left no prints for others to follow. Many other places, Jesus did leave an example for followers to imitate.

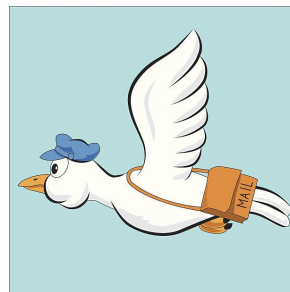
As I ponder this word, footprints, what side am I supposed to be on, creating a path and leaving imprints behind, or following in the steps of others who have gone before me? Perhaps I don’t have to choose only one way or the other, but something in the middle, combining the best of established wisdom and fresh insight.

I remember a particularly long walk with one of my golden retrievers years ago when we found ourselves on pavement that wasn’t fully hardened. We left a double set of prints: her paws and my sneakers. Footprints don’t have to wash away with the next tide, as they do on the sand, nor do they have to be intentional and planned, as in the example set by a well-lived life.

For now, with a quarter of the year still before me, I’m comfortable in the middle of following the footprints of others and leaving my footprints for others to follow. In the middle is where we all come together to share the grace, mercy, and love of our generous Creator. I hope your star word is leading you on a soul-filled adventure, too.

*Rev Michele*

The Communications Team did not formally meet in the past month, but we have continued to stay connected through e-mail and texts and calls to keep the church website updated and the Facebook page active with current postings. Like clockwork each month, we collect newsletter submissions every third Friday of the month, proofread newsletter drafts, and sign off on the newsletter for publication and distribution. Additionally, our committee posts the weekly church service bulletin and monthly newsletter to the website, we assist with streaming worship services, we post songs used in the worship services to licensing companies each week as required by copyright laws, and we assist as needed with newspaper columns. We have dedicated team members on our committee, and we are honored to serve the congregation.



**Your Communications Team** – Liz, Claudia, Weldon, Kathy, and Rev. Michele

September is always a month of both remembrance and hope. We share the moments with family and friends on Labor Day on September 4. We share the memories of that life and country altering day of September 11<sup>th</sup> twenty-two years ago. And, after this long and hot summer, we share hope as we bring in Autumn on September 23<sup>rd</sup>.

Our seasons work together like the **Worship Team** works together – to bring the best and appropriate worship service and music to each Sunday.

We gather together each Sunday beginning at 9:45 am to share Sunday School. Worship begins at 11:00 am in the Sanctuary and on-line. We share communion the first Sunday of each month. Communion and home communion will be shared on September 3<sup>rd</sup>. The Lord's Table is long and open at First Presbyterian.

Come share the word and music with us.

Mary, Liz, Joshua, Jimmy, Kathy, Lynn and Rev. Michele



### THE STAFF

Pastor – Rev Michele Goff  
[ReverendGoff@gmail.com](mailto:ReverendGoff@gmail.com)

Administrative Assistant – Debbi Ricci  
[hendersonfirstpres@gmail.com](mailto:hendersonfirstpres@gmail.com)

Music Director – Joshua Allen

### THE SESSION

Liz Cross  
 903-658-1732  
[eebuckner217@gmail.com](mailto:eebuckner217@gmail.com)

Claudia Morgan-Gray  
 903-646-0506  
[claudiam@weldonrgray.com](mailto:claudiam@weldonrgray.com)

Mary Lowe  
 903-646-3133  
[barberlowe1@gmail.com](mailto:barberlowe1@gmail.com)

Lynn Tieken  
 903-738-1621  
[johnlynnt@eastex.net](mailto:johnlynnt@eastex.net)

Steve Lowe  
 903-658-0323  
[stevel@lowetractor.com](mailto:stevel@lowetractor.com)

Kathy Porter - Clerk of Session  
 903-646-0162  
[kathyporter301@gmail.com](mailto:kathyporter301@gmail.com)

### FINANCE AT A GLANCE



<b>July 2023:</b>		
<b>IN</b>	<b>OUT</b>	<b>BALANCE</b>
\$11,455	\$12,652	\$-1,197.00
<b>June 2023:</b>		
<b>IN</b>	<b>OUT</b>	<b>BALANCE</b>
\$17,629**	\$13,181	\$4,448
<b>Year to Date:</b>		
<b>IN</b>	<b>OUT</b>	<b>BALANCE</b>
\$149,541*	\$87,626	\$61,915

\* Includes \$75,117.80 & \$10,796.30 insurance receipts for roof damage.

\*\* Includes \$10,796.30 insurance receipt for roof damage.

**CREATION CARE COHORT** The following is a wonderful Gilmont opportunity. Rev. Michele and Kathy are already registered to attend. FPC -Henderson is a "Green Church". So please consider signing up for this stewardship of the earth cohort.



Gilmont Camp and Conference Center and Grace Presbytery Congregational Support Committee are inviting you to join with others who have a passion for stewardship of the Earth for a **Creation Care Cohort, Monday evening, October 30 to Thursday noon, November 2**. This is an opportunity to meet those who are active in Earth Care around the Presbytery, to encourage one another, learn from one another, inspire one another. We hope this will be a gathering of those who have been involved in this ministry for a long time and those who are just learning. Perhaps you have something to share. We all have something to learn.

Gilmont has as its mission to be a safe, sacred space where all are invited to grow closer to God, creation, others, and themselves. The **Creation Care Cohort** will be an opportunity to spend time on the land, connecting our lives with creation. It will be an opportunity for listening and connecting to God in how God is inviting you at this time into deeper stewardship of God's creation. It will be an opportunity to listen and connect to others and to see what is stirring within you. We all need these moments away to see and hear and listen. An invitation is extended to you to come.

The cost for participants is only \$100 for the first 15 to register. The remaining program costs are being underwritten by Congregational Support Committee grants and Grace Presbytery. The cost after the first 15 is \$300. Consider bringing your whole team for some time away. Registration is now open. We hope to see you at Gilmont, October 30-November 2.

A new ministry cohort of Grace Presbytery that seeks to coordinate, facilitate, and connect leaders in the creation care community.

**Leaders:** Bryan Smith, Seminary of the Wild

Miatta Wilson, Mission Associate for Christian Formation, PC(USA)

Clay Brantley, Parish Associate, Trinity Presbyterian Church, McKinney

Lil Smith, Perkins School of Theology, Southern Methodist University

Reconnect with Creation – a cohort focused on our relationship with the earth

- *Are you yearning to reconnect with creation?*
- *Do you sense a need to dig in the dirt?*
- *Is nature a window into your relationship with God?*

Perhaps it is time to take a walk in the wild and join the new Creation Care ministry cohort of Grace Presbytery that seeks to coordinate, facilitate and reconnect leaders in the creation care community.

The rhythm of the cohort invites new discovery of "wild spirituality" for individuals, small groups, and congregations. There will be extensive "time on the land/in the wild" to digest these new discoveries. And, we will work together on a PDA project to put our discoveries into action.

A link to register can be found at Grace Presbytery Event page

<https://www.gracepresbytery.org/event-calendar/>



August go away and September and cooler weather come and stay! The heat has been unruly. The 100+ temps have impacted the A/C systems and the yard. We had some opportunity in the Fellowship Hall cooling unit. Thanks to Michael DeLeon for coming to our rescue and with his skill set repairing the A/C unit.

We will have another new roof! The roof repair has been delayed and will be replaced in September. We'll also be having some new glass installed and some re-caulking around windows.

The refrigerator in the kitchen is fixed and working. After a not so minor flood in the hallway by the Pastor's office, you'll note the new carpet in her office. It's nice.

We had a busy month. We'll be okay if everything stays working and happy for this month.

#### **Building & Grounds Team**

Steve, John, Weldon, Tom, Charlie, Kathy & Claudia

### **Council Actions**

August 17, 2023

- ◇ Prayed and shared joys and concerns together
- ◇ Reviewed Shepherd's lists
- ◇ Elected Commissioner to September 23 Grace Presbytery meeting
- ◇ Reviewed Staff changes at Grace Presbytery
- ◇ Noted the Minimum Effective Salary for Pastors for 2024
- ◇ Noted Session actions needed by the end of the year
- ◇ Noted future donation of \$5000



Memorial Gifts have been received in memory of :

Joey Lyons and Alfred Cameron Mitchell



## Spiritual Practices Retreat - September 8-10, 2023

It's Cool to be Kind! The annual Gilmont Spiritual Practices Retreat (now in its 6th year!) has focused on one of the Fruit of the Spirit and this time we will focus on KINDNESS! Come learn the difference between being nice and being kind! Come experience HESED, the Hebrew word translated as LOVING-KINDNESS, as exemplified by Ruth and commanded in Micah 6:8. As a spiritual fruit, kindness is something that we cannot manufacture ourselves, but must grow from within with the help of the Holy Spirit. Often the person we have the hardest time being kind to is ourselves. Come experience celtic worship, music, and meditations which will invite you to receive creation's kindness and be kind to the Earth. Stories, songs, and community will be shared and built. Music will be led by John Mark Solomon. Talks will be shared by Clay Brantley and Kenny Rigoulot. Workshops will be offered by Lil Smith.

helping with food and utilities assistance but will no longer assist with rental assistance or motel stays. Two of our members, Claudia and Kathy, serve on the Board of Directors of HIM and Kathy is a volunteer every Wednesday morning. They are always looking for additional volunteers. If you're interested, let Kathy or Claudia know.

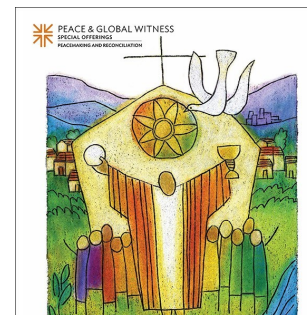
We participated in the new teachers goodie bags through the Chamber of Commerce.

Kathy and Louise put FPC's goodie bags together that included a stress squeeze star with our church name and logo, and bookmark that announced "Teachers are Super Stars"

We continue to be among the only volunteers with Meal on Wheels. Our team - Mary, Kelly, Claudia, Kathy, and Lynn -- still deliver Meals on Wheels each Friday. If you'd like to be part of the team, let Lynn know.

Please also save the date and plan to attend the National Night Out festivities at Fair Park, Henderson on Tuesday evening, October 3rd!! Our church will have a table and will share with the community.

Many hands and open hearts, Outreach Team:  
Lynn, Mary, Jimmy, Louise, Claudia, Kathy, John, Kelly



### Peace & Global Witness Offering— Peacemaking and Reconciliation

Beginning in September and will culminate on October 1<sup>st</sup>, World Communion Sunday.

## Outreach Team September, 2023

Try to remember, the days of September.....

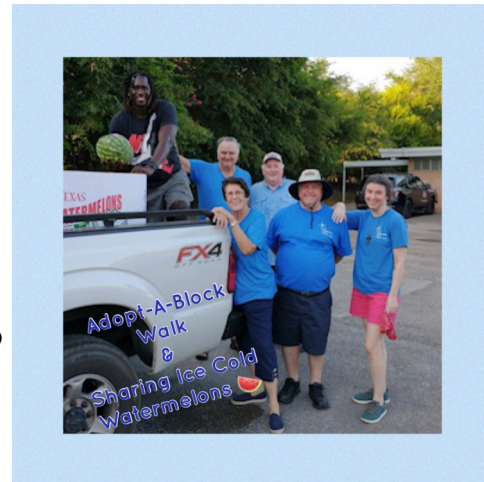
We say a fond (and sweaty) farewell to August. Boy has it been hot and boy have we been busy. This church family is awesome and we continue as a church to make big impacts where they matter.

As a congregation, we donated graciously and generously to the Yates Park School Supply Drive - (\$702 raised from congregation specific for this project plus \$126.50 that the church gets to keep and use locally from the Pentecost Special Offering for children impacting projects). So FPC-Henderson donated \$828.50 to help purchase needed school supplies and backpacks for children in our community. Over 2,000 students were served through this project this year. Thank you to everyone but special thanks to Rev. Michele, Kathy, Lynn, Louise and Charlie who went up and helped fill the backpacks the day before distribution. Well done.



Our Watermelon Extravaganza was a success. We shared iced cold watermelons with our neighbors through our Adopt-A-Block walk and then shared with members of the congregation in Fellowship hall after the walk.

It is no secret that the need remains high to help keep the shelves of Henderson Interchurch Ministry (HIM) filled. The need by members of our community for food security continues to increase and for some undetermined amount of time, the sister organization PALS was closed for a needed renovation. Therefore, the need from HIM increased substantially during this time. Our church is a long-time and strong supporter and we continue in that roll. HIM is focusing on



## Christian Education

The Sunday School class will be finishing up the study of Luke: Jesus and the Outsiders, Outcasts, and Outlaws by Adam Hamilton the first week of September. After that, on September 10<sup>th</sup>, we will begin a new and different study with Kyle Kramer's **Making Room**. A short write-up to peak your interest ask --"Is your life an accurate reflection of what you believe to be most important – or do you struggle to bridge your ideals with your reality? Most of us fall short of fully living out our values." It appears it will point us to answer the question of ourselves – are we living simply and soulful lives. I for one am intrigued. Are you? If you'd like to join us and/or if you'd just like have a book ordered for you, please let Rev. Michele or Lynn know. We want to remind or introduce some of you to a treasure we have within the church – our Library. What a sweet and useful get away tool and room. As we work our way doing updates and facelifts throughout the church, the Library will be enhanced and reopened for you in September. We are grateful to Margaret Hillin for the recent donation of some books for the Library. If you haven't, please go see what the Library has for you.

Christian Education Team

Lynn, Claudia, Kathy, Jimmy and Rev. Michele

"One day you turn around and it's summer – Next day you turn around and it's fall—and the springs and the winters of a lifetime – Whatever happened to them all?" It does seem that time is moving so quickly these days doesn't it. How can it already be September?



As we hopefully move toward the fall season, the Fellowship Team is hoping to be able to put some congregation gatherings together soon.

In the meantime, know that you are loved, thought of, prayed for and our shared time is missed. We'll be in touch about our "get together" and just so you know, rides are available too!

Home communion visits continue on the first Sunday of each month after church service. Extending our table is a welcomed time for in person visit with our friends and members. Communion and home communion for September will be 3<sup>rd</sup>. As always, remember to keep our friends and members in your prayers.

There is always room at our table and in our hearts for everyone.

Claudia, Lynn, John, Kathy, Chris, Suzanne, Weldon, Mary & Rev. Michele

# September 2023



Sun

Mon

Tue

Wed

Thu

Fri

Sat

**Duty Elder for September:**

Claudia




**Liturgists for September:**

9/3—Kathy

9/10—Carol

9/17—John H.

9/24—Stefen

					1 Meals on Wheels	2
3 9:45 Sunday School 10:00 Coffee Fellowship 11:00 Worship Sanctuary/ FB /Communion Home Communion	4 <b>Labor Day</b> Office Closed 	5	6	7	8 Meals on Wheels	9
10 <b>Grandparents Day</b> 9:45 Sunday School 10:00 Coffee Fellowship 11:00 Worship Sanctuary 3:00 Walk-with-a-Doc, at Fair Park	11 <b>Patriots Day</b> 	12	13 9:30 Chamber Mid- Morning Coffee at Texas Baptist Institute	14	15 Meals on Wheels	16
17 9:45 Sunday School 10:00 Coffee Fellowship 11:00 Worship Sanctuary	18	19	20	21 2:00 LEAN 6:00 Session Meeting	22 Meals on Wheels Newsletter Deadline	23 <b>Fall Begins</b> 
24 9:45 Sunday School 10:00 Coffee Fellowship 11:00 Worship Sanctuary	25	26	27	28	29 Meals on Wheels	30

**September Birthdays:**

1- Cindy

15- Stefen

17- Claudia

24-Lynn

29-Louise

