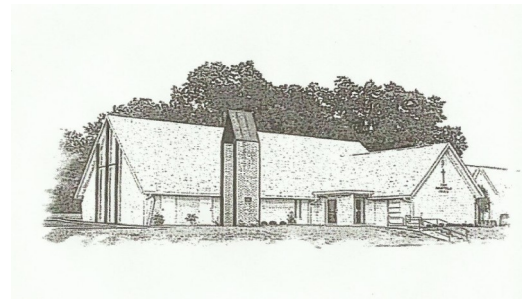




*"Serving God,
Honoring Creation,
Embracing Differences"*

**FIRST PRESBYTERIAN CHURCH
P. O. BOX 773
HENDERSON, TEXAS 75653-0773**



903-657-2529

www.fpchendersontx.org



Stamp

Mailing Label



September 2024 Vol. 56:09



Mover of Mountains

Faith is a force that is greater
than knowledge or power or skill,
And the darkest defeat turns to triumph
if you trust in God's wisdom and will,
For faith is a mover of mountains —
there's nothing man cannot achieve
If he has the courage to try it
and then has the faith to believe.

~Helen Steiner Rice

We will usher in Autumn this month. We are all ready for the cooler weather and the change of season.

We are sorry that Joshua is no longer serving as our Music Arts Facilitator. We are thankful for the talents he shared, and he will be missed. We wish him the best. God Loves each of us, and we are all part of this church family.

This month our pulpit will be filled by:

Sept. 1 - Steve Newton (Join us for communion)

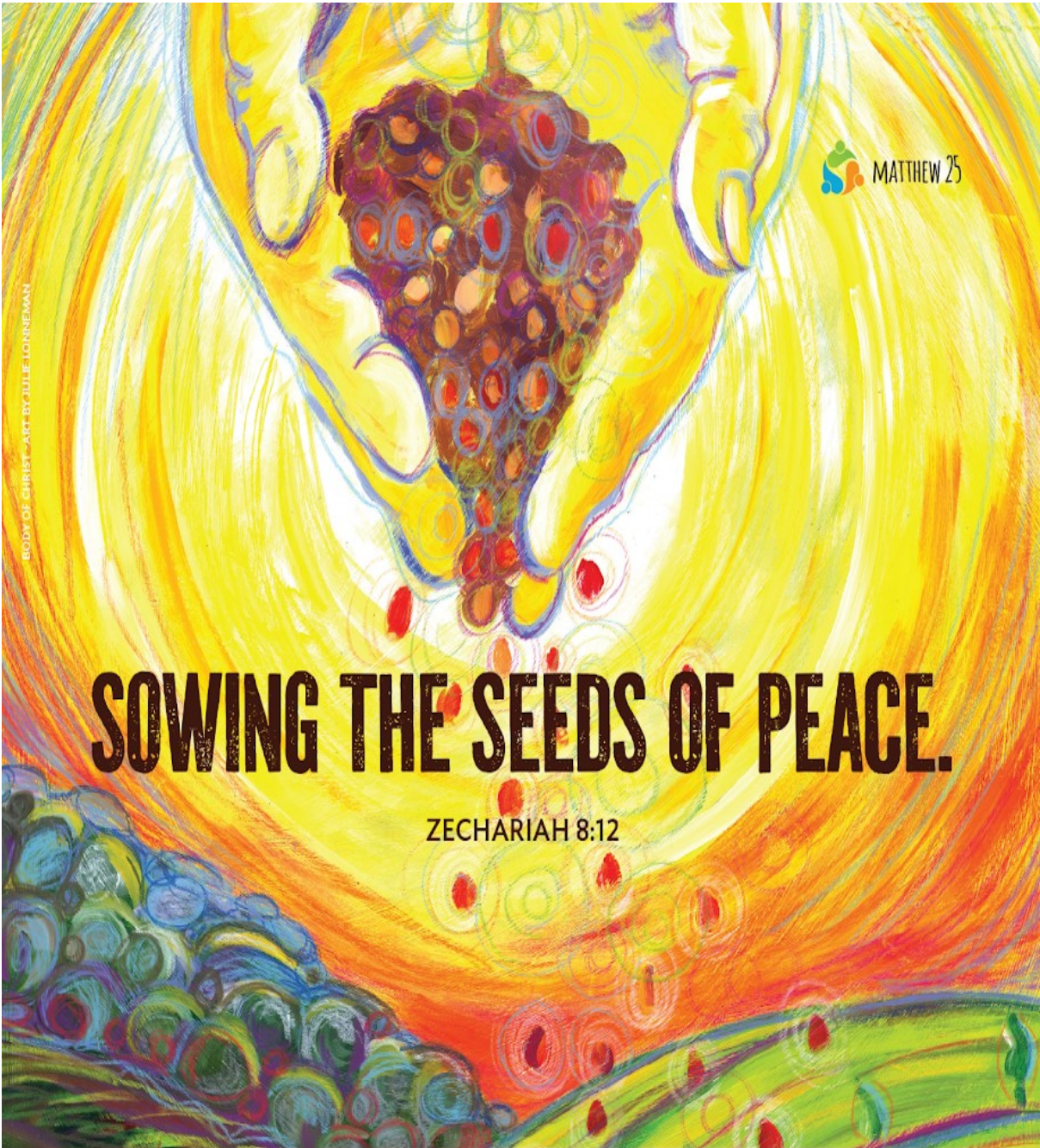
Sept. 8 - Jimmy Chapman

Sept. 15 - Jerry Carpenter

Sept. 22 - David Reeder

Sept 29 - Evan Dolive

Join us every Sunday for Worship. We worship at 11:00
Sharing with you a blessed September. Mary, Jimmy, Kathy, Lynn, Jan & Liz



BODY OF CHRIST - ART BY JULE LONNEMAN

MATTHEW 25

SOWING THE SEEDS OF PEACE.

ZECHARIAH 8:12

SEPTEMBER 8-OCTOBER 6, 2024



PEACE & GLOBAL WITNESS
SPECIAL OFFERINGS
PEACEMAKING AND RECONCILIATION

THE STAFF

Administrative Assistant – Debbi Ricci
hendersonfirstpres@gmail.com

THE SESSION

Liz Cross
903-658-1732
eebuckner217@gmail.com

Claudia Morgan-Gray
903-646-0506
claudiam@weldonrgray.com

Mary Lowe
903-646-3133
barberlowe1@gmail.com

Jimmy Chapman
903-649-0341
jimmychapman46@hotmail.com

Steve Lowe
903-658-0323
stevel@lowetractor.com

Kathy Porter - Clerk of Session
903-646-0162
kathyporter301@gmail.com

FINANCE AT A GLANCE



July 2024:			
IN	OUT	BALANCE	
\$8,695	\$7,706	\$ 989	
June 2024:			
IN	OUT	BALANCE	
\$5,329	\$10,342	-\$5,013	
Year to Date:			
IN	OUT	BALANCE	
\$58,655	\$64,117	-\$5,462	

DID YOU KNOW?



C.E. GREEN TEAM

The Adult Sunday class is continuing the study and discussions of ***The Making of the Bible: From the First Fragments to Sacred Scripture***. This is a very interesting discussion of how the Bible came to be. If this sounds like something interesting to you, everyone is welcome to come and join in the discussion in the parlor at 9:45 each Sunday.

After we complete the current study, the group has been looking at two possible books to study next. Under consideration are: ***Faith Unraveled*** by Rachel Held Evans and the other is ***Word of God, Word of Life: Understanding the Three-Year Lectionaries*** by Gail Ramshaw. Because those attending the current study have enjoyed it so much there is also conversation around a study focusing on the desire to learn more about people of the Bible, including, but not limited to, some of the more minor-prophets. Stay tuned. When the group decides on the next study material, we'll share.



In addition and with the mindset that it is never too early to consider the material for the upcoming Advent, we are pre-planning our study material for the four Sundays preceding Christmas. The next meeting of the CE Committee will be on October 13th. At that time, the final choice of the study material for Advent will be decided. The Advent Study will begin on Sunday, December 1, which is the first Sunday in Advent. We invite everyone to consider joining us for the Advent Study in December. We would love to have a large group of people participate in our study, even those of us that may not normally attend Sunday School. We hope you will consider our invitation.

Again, the next meeting of the CE Committee will be on October 13th after church.

Learning together in love & faith,

Jimmy, Steve, Lynn, Kathy & Sylvia

Hello September! Greetings from the **Building and Grounds** committee!

September is hopefully bringing us cooler weather. We’ve endured a normal hot Texas August but in comparison to last year at this time we had already experienced multiple 100 degree days. This year August has been much kinder to us. In turning our attention to September, keep in mind the official first day of fall is the 22nd.

Check your automatic sprinklers for watering efficiency if you have them. Watering your lawn and landscape is very important as we head into fall. September high temps still average in the low nineties so be mindful to continue watering everything to keep it green and healthy with October looming. Watering around the house also keeps your homes foundation stable eliminating more serious issues from shifting soils.

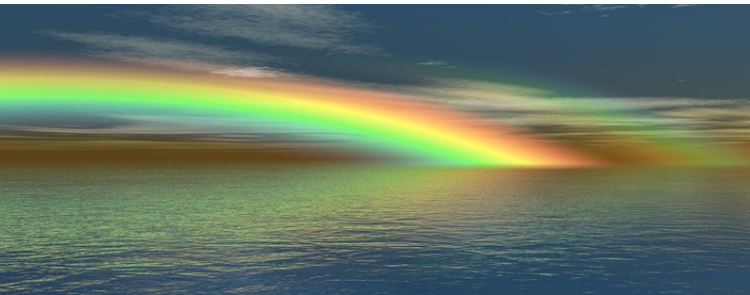


We continue to be grateful for the folks that serve as the Building & Grounds Team. We have a few requests for everyone – please return the scoop in the ice machine to the holder. We’ve had a few instances of it being left lying in the ice and then getting covered over. Also please be aware of your surroundings while at the church. And if you notice something needing attention – say something.

Building & Grounds,
Steve, Tom, John T, Weldon, Charlie, Michael, Kathy and Claudia

Our traditional Fellowship/Outreach Watermelon Extravaganza was Monday, August 19th at 6:00 pm in the Fellowship Hall. After the Outreach Team delivered ice cold watermelons to our Adopt A Block neighbors, we all gathered together in the Fellowship Hall to celebrate the end of summer. Ice cold, juicy watermelon dripping down your arm – what a great way to end the summer? Thank you to all of you that came and joined us.

Regretfully, we are putting a pause on the series of **More Light Fellowship** gatherings. Should they be reinstated at a later date, we’ll let you all know. Thank you to all those that came out and supported and participated in this short-lived but beneficial series.



You are with us always in mind, body and spirit even when we’re not together in person.
The Fellowship and Member Care Team

Weekly your **Communication Committee** posts the church service bulletin to the website, assists and posts songs used in the worship service to license companies as required by copyright laws. Also, we have continued to keep the church website updated and the Facebook page active with current postings.

Monthly we collect any newsletter submissions, conduct multiple proofreads of the newsletter draft, and sign off on the newsletter for publication and distribution.

With many responsibilities, our committee members keep busy and meet multiple times per month by telephone, text, face-to-face, and e-mail doing what they do best - "communicating."

If you have something to include in the newsletter, the submission deadline is the third Friday of each month. Please e-mail submissions to Liz and Claudia.

We remain resolute, excited, devoted, and honored to serve the congregation.

Team Members are Liz, Claudia, Weldon, and Kathy.





The **Yates Park School Supplies Project** on August 9th was very successful. Once again, our church played an active role in helping see lots of kids were ready for school. They gave out 1300 filled back packs. Our church helped with the process. Big thanks to Louise, Charlie, Lynn, John, Kelly and Tom. In addition, our congregation brought a significant amount of supplies toward the effort and also collected \$185 to assist with additional supplies. Thank you to everyone who participated in this important and successful event. We continue to show we care about our community.



Our August **Adopt A Block** is always our Watermelon Extravaganza. On Monday, August 19th, we loaded the back of a pickup with iced-down watermelons and visited our neighbors. With the heat, a cold watermelon delivered by our group brings smiles that light the world. One of the best events! After we delivered to our neighbors, we gathered in the Fellowship Hall with our church friends. Thanks to all that came to help and enjoy.

Our second in a series of monthly **More Light Fellowship** events was on August 14th. It was a successful event. Regretfully, the series is being put on pause at this time.

The **HIM** pantry shelves are in extra need of our help. While we have set aside the first Sunday of every month as the date to bring your HIM food donations, we encourage you to bring food donations as often as you can. They are always in need of canned goods and dry goods. Your help is always greatly appreciated.

Did you know that our **Meals on Wheels** team is the only group of volunteers that Meals on Wheels has helping them out? The other folks are employed by Meals on Wheels and they are a wonderful and welcoming group of folks. They are really happy we are part of their team. We deliver on Fridays and sometimes help out with other routes when one of them are out for travel or health issues. It is always a good day to interact with our friends on our route. Our Team is Lynn, Kathy, Kelly, Mary, Claudia and Rick. It is awesome! Come join us.

Within the reach of grace,
Claudia, Liz, Lynn, Mary, Kathy, Kelly, Jimmy, Louise, John, Jan & Weldon

September 2024



Sun Mon Tue Wed Thu Fri Sat

1 9:45 Sunday School 11:00 Worship/ Communion with Steve Newton Home Communion	2 LABOR DAY  Office Closed	3	4	5	6 Meals on Wheels	7
8 9:45 Sunday School 11:00 Worship with Jimmy Chapman	9	10	11 Patriot Day	12	13 Meals on Wheels	14
15 9:45 Sunday School 11:00 Worship with Jerry Carpenter	16	17	18	19 2:30 L.E.A.N. Mtg 6:00 Session Meeting	20 Meals on Wheels Newsletter Deadline	21 
22 Fall Begins 9:45 Sunday School 11:00 Worship with David Reeder	23	24	25	26	27 Meals on Wheels	28
29 9:45 Sunday School 11:00 Worship with Evan Dolive	30					

Duty Elder for September:

Mary

Liturgists for September:

1– Lynn

8– Carol

15– Louise

22– Liz

29– Jan

September Birthdays:

1– Cindy

15—Stefen

17—Claudia

24—Lynn

29—Louise

